



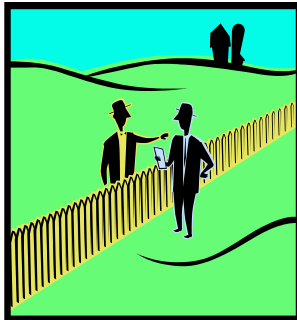
### Is a Building Permit Required?

No – a building permit is not required, however it is always safest to call your municipal office if you have any questions (519-482-3997).

### Where Can I Locate My Fence?

All of the fence should be within the lot lines of your property. This includes the support posts, as well as all pickets, boards, cross members, etc.

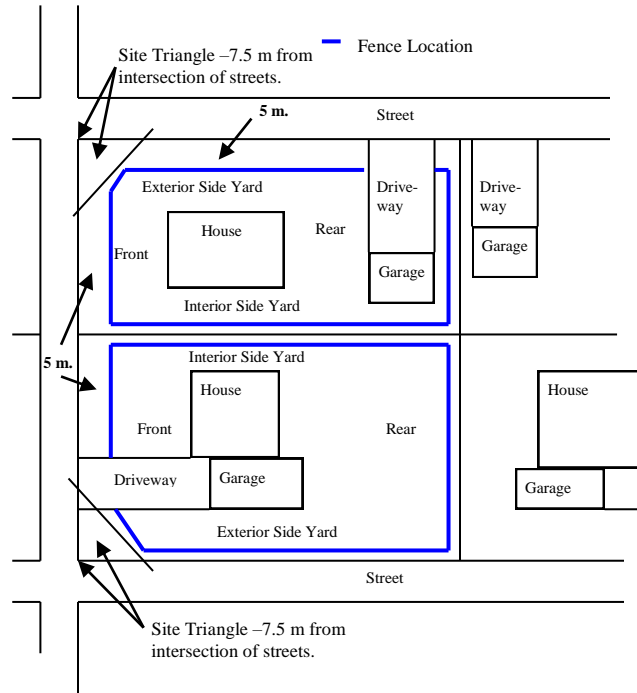
Fences are shared with a neighbour and placed on the common or dividing lot line. While this may work out fine as long as the properties remain in the same ownership, you are taking the risk that new neighbours may not be as easy to get along with, and disputes can arise.



In urban areas, on an interior lot, a fence over one metre in height

cannot be established closer than 5 metres to the front lot line.

For a corner lot the same applies to the front yard lot line and also the exterior side yard lot line. In addition, the site triangle formed by the intersecting street lines and a line drawn between them must be free of fencing to avoid any vision obstruction to drivers of motor vehicles. From the intersection of the two streets measure 7.5 metres along the front lot line to a point and 7.5 metres along the exterior side lot line to a point, join the two points to form a triangle (see illustration). This forms the site triangle.



### What Style of Fence Can I Install?

In residential areas picket, board, cedar rail and chain link are all acceptable styles. If in doubt, call the municipal office (519-482-3997). Always consider the reason or why you are installing the fence. Is it for privacy, security reasons, to keep pets and children safe, or purely to add charm and character to your property. This will determine the style of fence you need.

If you have a swimming pool, specific fencing requirements and styles are required. Please attend at the municipal office for a copy of Swimming Pool/Fencing By-law 25-2008, or access the same from the Central Huron website.

### Things to Remember –

- Locate and construct your fence with future maintenance in mind.



- Call all applicable utilities for locates before digging such as Cable TV, Bell Telephone, Union Gas, Clinton Power Corporation, etc.